



Apartment 6 The White House, Watergate Bay, Newquay, TR8

4AD

david ball
Agencies

This beautifully presented chain free holiday apartment in the sought after location of Watergate Bay comprises an open plan living room/kitchen, two double bedrooms, master ensuite shower/cloakroom and family bathroom. Outside the property benefits from secured allocated parking, secure surf store and landscaped communal gardens.

£350,000 Leasehold - Share of

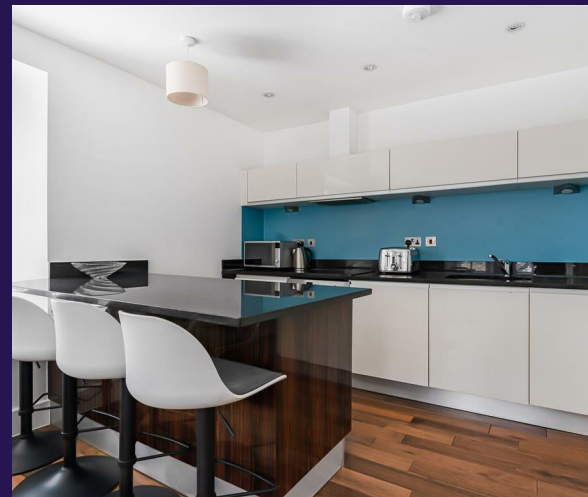
Key Features

- Luxury Holiday Apartment
- Open Plan Living Room/ Kitchen
- Secure Allocated Parking
- Communal Landscaped Gardens
- Two Double Bedrooms
- Surf Store & Outdoor Shower
- 400 Meters From The Beach
- Chain Free

The Property

A beautifully presented first floor apartment set within The Whitehouse, a highly sought after conversion of just ten exclusive homes. This chic coastal sanctuary combines traditional character with contemporary luxury, featuring engineered walnut flooring and a premium kitchen finished with granite and walnut. The heart of the home is a light filled open plan living area, supported by underfloor heating throughout. The property also boasts two double bedrooms, master en-suite shower/cloakroom and family bathroom.

Set in extensive landscaped communal gardens, the development is just 400 metres from the shoreline with a private winding footpath that leads directly from the gardens down to the golden sands of Watergate Bay. There is long private gravel driveway which leads down towards the Whitehouse, via an electric vehicular access gate with video entry system to a circular car parking area. There is an allocated car parking space for the apartment and additional communal parking.





Location

Watergate Bay is one of North Cornwall's most iconic and sought after coastal destinations, renowned for its two miles of golden sands and dramatic cliff side scenery. Situated approximately three miles from Newquay, it offers a sophisticated yet laid back lifestyle that perfectly balances adrenaline fueled water sports with tranquil seaside seclusion.

Cornwall Airport Newquay located just a few minutes' drive away, providing easy links to London and other UK cities.

Services

The following services can be found at the property: Mains electricity, water and drainage, however, we have not verified any of the connections.

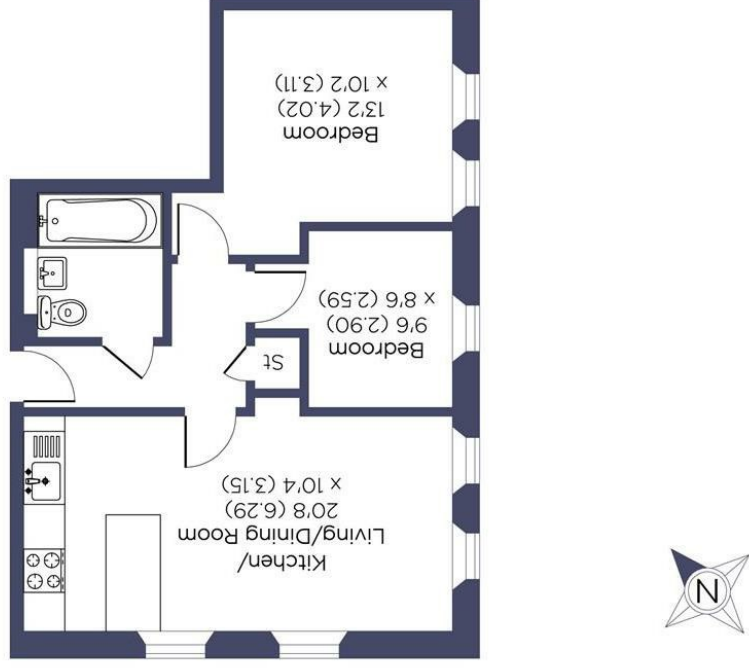
Leasehold Information

Lease: 982 years remaining

Service Charge including gas and water: £5,930.24

1/10th of the freehold

6 The White House, Tregurrian, Newquay, TR8 4AD8
 Approximate Area = 532 sq ft / 49.4 sq m



Floor plan produced in accordance with RICS Property Measurement 2nd Edition. Although Pink Plan Ltd ensures the highest level of accuracy, measurements of doors, windows and rooms are approximate and no responsibility is taken for error, omission or mistatement. These plans are for representation purposes only and no guarantee is given on the total square footage of the property within this plan. The figure icon is for initial guidance only and should not be relied on as a basis of valuation.



01637
 850850
 www.davidballagencies.co.uk



Connecting People to Property Perfectly

e.sales@dab.estate
 34 East Street, Newquay, Cornwall TR7 1BH

Energy Efficiency Rating	
Current	Potential
80	80

England & Wales	
EU Directive 2002/91/EC	
Very energy efficient - lower running costs	A (81-91)
	B (69-80)
	C (55-68)
	D (39-54)
	E (21-38)
	F (1-20)
Not energy efficient - higher running costs	G

1. Particulars: these particulars are not an offer or contract nor part of one. You should not rely on statements by David Ball Agencies (DBA) in the particulars or by word of mouth or in writing as being factually accurate about the property, its condition or value. Neither DBA nor any joint agent has any authority to make any representation about the property or development and accordingly any information given is entirely without responsibility in the part of the agents, sellers or lessors. 2. Images paragraphs and other information: any computer generated images, plans, drawings, accommodation schedules, specifications details or other information provided about the property ("information") are indicative only. Any such information may change at any time and must not be relied upon as being factually accurate about the property. Any photographs are indicative of the quality and style of the development and do not represent the actual fitting and furnishing at this development. 3. Regulations: any reference to alterations to the property or use of any part of the development is not a statement that any necessary planning, building regulations or other consents has been obtained. These matters must be verified by an intending purchaser. 4. Fixtures and fittings: supplied services and appliances have not been tested by the vendors agent. Prospective purchasers are advised to make their own enquiries. 5. All dimensions are approximate.